



Early Journal Content on JSTOR, Free to Anyone in the World

This article is one of nearly 500,000 scholarly works digitized and made freely available to everyone in the world by JSTOR.

Known as the Early Journal Content, this set of works include research articles, news, letters, and other writings published in more than 200 of the oldest leading academic journals. The works date from the mid-seventeenth to the early twentieth centuries.

We encourage people to read and share the Early Journal Content openly and to tell others that this resource exists. People may post this content online or redistribute in any way for non-commercial purposes.

Read more about Early Journal Content at <http://about.jstor.org/participate-jstor/individuals/early-journal-content>.

JSTOR is a digital library of academic journals, books, and primary source objects. JSTOR helps people discover, use, and build upon a wide range of content through a powerful research and teaching platform, and preserves this content for future generations. JSTOR is part of ITHAKA, a not-for-profit organization that also includes Ithaka S+R and Portico. For more information about JSTOR, please contact support@jstor.org.



CATALOGUE OF THE WORKS OF ART,

COMPOSING THE LARGE AND VALUABLE COLLECTION OF OIL PAINTINGS, STATUARY, AND BRONZES,
 TO BE ALLOTTED, GRATUITOUSLY, TO SUBSCRIBERS OF THE COSMOPOLITAN ART ASSOCIATION,
 AT THE ANNUAL DISTRIBUTION, ON THE 28TH OF JANUARY NEXT.

- | | |
|---|---|
| 1. Statue of the Wood-nymph <i>Angelo Bienaime.</i>
Life-size, marble. | 13. "Spring" <i>E. D. Palmer.</i>
An ideal bust in marble. |
| 2. Bust of Daniel Webster <i>Rocia.</i>
Marble, life-size. | 14. Psyche <i>Visini.</i>
Statue in marble. |
| 3. Struggle for the Heart <i>Borani.</i>
A group in marble. | 15. Magdalen <i>Lendberg.</i>
Statue in marble. |
| 4. Bust of Henry Clay <i>Rocia.</i>
Marble, life-size. | 16. Franklin, bas-relief <i>Carl Muller.</i>
Medallion in bronze. |
| 5. Venus and Apple <i>Visini.</i>
Statue in marble. | 17. Blessing little Children <i>Myroy.</i>
A group in bronze. |
| 6. Bust of John C. Calhoun <i>Rocia.</i>
Marble, life-size. | 18. Washington, bas-relief <i>Carl Muller.</i>
Large bronze medallion. |
| 7. Child of the Sea <i>After Perelli.</i>
Statuette in marble. | 19. Cupid's Captive <i>Myroy.</i>
A group in bronze. |
| 8. Bust of Apollo <i>Marci.</i>
Life-size in marble. | 20. Calhoun, bas-relief <i>Carl Muller.</i>
Large medallion in bronze. |
| 9. Innocence <i>After Bienaime.</i>
Statue in marble. | 21. Cupid Disguised <i>Rolland.</i>
Statuette, Parian marble. |
| 10. Bust of Diana <i>Marci.</i>
Life-size in marble. | 22. Clay, bas-relief <i>Carl Muller.</i>
Medallion in bronze. |
| 11. The Little Truant <i>After Crantré.</i>
Statue in marble. | 23. Franklin at Study <i>Myroy.</i>
Statuette in bronze. |
| 12. The Captive Bird <i>After Crantré.</i>
Statue in marble. | 24. Webster, bas-relief <i>Carl Muller.</i>
Medallion in bronze. |



INTERIOR VIEW OF GALLERY—THE WEST ROOM.

- 25 to 48. Large Medallions, Franklin, in bas-relief *Muller*.
49. Mother and Child, 44 x 64 *Rogers*.
This celebrated picture, painted by Rogers, at Rome, after the original by Murillo, represents Mary the mother, and the infant Saviour. The harmony of the colors, and the expression of the figures, have all the merits found in the old masters.
50. Venus Amorini, 50 x 40 *Albani*.
A valuable old painting by Francisco Albani, one of the old masters, represents the loves of Venus, who is seated by a fountain or basin, surrounded by cupids, wreaths of flowers, &c.; dark foliage forms the background. This painting is over two hundred years old, and is still in fine preservation.
51. View near Lake George, 29 x 36 *Bingham*.
A quiet landscape of this romantic spot, abounding with rocks and trees in the foreground, while the beautiful lake is seen in the distance beyond.
52. Old Flint-lock, 30 x 37 *Flagg*.
The old man is telling his friend how he used to kill the duck, with his old gun, forty years ago. They are seated before a huge old fireplace, surrounded by dogs and game.
53. Luther and Melancthon, 25 x 30 *Koffman*.
A fine historical piece of these noted reformers.
54. The Oetzthal (Tyrol), 33 x 48 *Sommers*.
A rapid stream, with huge rocks, form the foreground, while beyond are the mountain-peaks, rising in grandeur above the mist. In the middle distance is a rustic bridge, and a group of Swiss peasantry.
55. The Grandfather's Pet, 15 x 17 *Meyerheim*.
A fine interior cottage scene. The gray-headed sire, who has left his work, is teaching his little grand-daughter to read. The mother near by is feeding a younger child.
56. Rippon's Farm, N. J., 38 x 48 *Sommers*.
A bit of still water, with scraggy oaks in the foreground, with wheat-fields and farm-houses in the middle distance. Foliage and high hills on the left; the sky betokens a storm.
57. The Day-dreamer, 35 x 31 *Lilly M. Spencer*.
Represents a beautiful young girl in the first bloom of womanhood, who has been rambling through the garden gathering flowers. She is reclining in the shade, near a fountain, with a face expressive of deep thought.
58. Swiss Mountain Girl, 18 x 20 *Blummer*.
A pretty Swiss girl seated on rocks, surrounded with goats and kids; beyond are mountains, foliage, &c.
59. Harvest Scene, 18 x 24 *Lawrence*.
Men and girls reaping and binding wheat.
60. Sweet Sixteen, 22 x 27 *Holley*.
A fancy sketch in pastel, of a young girl, oval.
61. The Happy Mother, 6 x 10
Composition Ivory, oval medallion.
62. Kingsley's Mill, 29 x 36 *Sommers*.
A view in Wisconsin. A pretty stream of water, foliage, and figures, form the foreground. In the middle distance is the mill; beyond are high wooded hills.
63. The Chocolate Girl, 22 x 35 *Hebert*.
A pretty petite waiting-maid, serving chocolate,—a character frequently seen in the cafés of Paris.
64. View near Little Falls, N. Y., 25 x 30 *Kingman*.
A horseman is riding up the road on the left, and a stream of water on the right. A cottage is seen amid the foliage in the middle distance; while beyond are lofty rugged rocks, and high hills.
65. The Water-nymph, bronze.
A statuette, representing a partially nude female figure, seated on a rock, drinking water from a shell.
66. English Landscape, 22 x 28 *Harting*.
A little stream of water on the left, spanned by a rustic bridge. A hunter and dog are reclining by the road-side. In the middle-ground are woods and cattle with little hamlets and a village in the distance, relieved by high mountains.
67. A Peep at the Missouri, 25 x 30 *Smith*.
View taken at Kings Hill, near St. Joseph, Buchanan county, Mo. A deep glade with foliage on the left, and a farmer going to his work form the foreground. In the middle distance is a snug little farm-house; while beyond, a glimpse of the river, with steamers coming up.
68. The Kitten's First Lesson, 17 x 20 *Meyerheim*.
This beautiful composition represents the interior of a peasant's cottage. The father and mother are surrounded with a happy group of children. The oldest of which has a dead mouse attached to his whip-lash, which he is dangling on the floor for the kittens to chase. One of which has made the capture, and the others are watching their chance at the prize.

NOTE.—All the paintings herein described, are elegantly framed in rich ornamental gilt frames, and go with the pictures.



INTERIOR VIEW OF GALLERY—THE CENTRAL ROOM.

- | | |
|---|---|
| <p>69. Galileo and the Doctors, 25 x 30. <i>Koffman</i>.
An historical composition, in which Galileo is leaving the council of the doctors, bearing in his hand a model of the globe.</p> <p>70. Winter, 24 x 29. <i>Otto</i>.
An original winter composition, representing a dense forest in mid-winter. In the foreground are figures gathering fagots.</p> <p>71. Faust and Margaret, 6 x 10.
Medallion, composition ivory, oval.</p> <p>72. The finding of Moses, statuette <i>Myroy</i>.
A group in bronze.</p> <p>73. Kiss me if you dare, &c., 25 x 30. <i>Lilly M. Spencer</i>.
This picture represents a coquettish girl, apparently engaged peeling apples. She is teased by some person, whom the picture does not show, who is trying to kiss her. She quietly seizes a spoon from the bowl of molasses on the table beside her, and is poisoning it to give the "provoking fellow" a daub. She looks around with arch expression and laughing eyes, and says, "Kiss me if you dare, but look out for 'lasses."</p> <p>74. Shokan Creek, 30 x 40. <i>Eglan</i>.
A view in Ulster county, N. Y., presenting a pretty stream of water pouring over the rocks in the foreground. On the banks are men drawing the seine. Dense woods form the background.</p> <p>75. Going to Church, 18 x 22 <i>Otto</i>.
An old couple are on their way to the village church, seen in the background. Figures and foliage in the distance.</p> <p>76. Winter on the Rhine, 13 x 18. <i>Harting</i>.
Skaters are seen on the ice in the foreground and middle distance; beyond is a city.</p> <p>77. The Fruit-gatherer, 6 x 10, oval.
Medallion in composition ivory.</p> <p>78. The Outlaw's Retreat, 40 x 50. <i>Wilson</i>.
A striking moonlight scene, composed of huge rocks, at the base of which the band of outlaws are building their camp-fire. Running water, tall trees, and rocks, fill up the foreground.</p> <p>79. Saying Mass, 10 x 12 <i>Hildebrandt</i>.
Interior view of a cathedral in Europe. Cabinet size.</p> <p>80. A Northman Hunter, statuette.
A figure in bronze, returning from the hunt, with game thrown over his shoulder.</p> | <p>81. Landscape, with Cattle, 23 x 30. <i>Lawrence</i>.
A group of cattle cooling themselves in a shallow stream. Woods in the distance.</p> <p>82. View near Somerset, Pa., 22 x 46 <i>Villers</i>
In the foreground are trees and figures, with water crossed by a rustic bridge. Beyond are cattle grazing in the meadows. In the distance is a village, and river with banks lined with foliage; beyond which are mountains.</p> <p>83. The Lovers, 6 x 10, oval
Medallion in composition ivory.</p> <p>84. Statuette of Pericles, bronze. <i>Myroy</i>.
Representing the celebrated Athenian statesman, orator, and general.</p> <p>85. View in Sullivan County, N. Y., 33 x 48. <i>Sommers</i>.
A small stream of water, with foliage and rocks, form the background. Beyond are boys fishing, and farm-house. A storm coming up.</p> <p>86. Mount Ida, 12 x 18. <i>Wilson</i>.
A view near Troy, N. Y. Cabinet size.</p> <p>87. Composition—Fruit and Flowers, 25 x 30. <i>Roberts</i>.
A fruit-dish, with peaches, plums, &c.; surrounding which, on the tablet, are cherries, figs, peaches, melons, and a small vase of flowers.</p> <p>88. Faust and Margaret, 6 x 10, oval.
Medallion in composition ivory.</p> <p>89. Marine View, 33 x 48 <i>Burch</i>.
A storm on the Jersey coast. Savage rocks on the right, against which the fierce waves are dashing. The foreground is strewn with dead bodies and pieces of wreck.</p> <p>90. The Flower-girl, 15 x 18, oval. <i>Meyerheim</i>.
A fancy sketch of a pretty country maiden, with a basket of flowers.</p> <p>91. View near Pittsburgh, Pa., 12 x 18. <i>Villers</i>.
A country road, near which is a mill, and bridge crossing a stream of water.</p> <p>92. Statuette of Phidias, bronze <i>Myroy</i>.
A famous sculptor of antiquity.</p> <p>93. Returning from the Hunt, 33 x 48. <i>Eglan</i>.
A group of hunters and their dogs, are returning from the hunt. A slain deer is slung across the back of the horse. Still water and a pine forest on the right, with snow-capped mountains in the distance.</p> <p>94. The Mother's Pet, 6 x 10, oval.
Medallion, composition ivory.</p> |
|---|---|



INTERIOR VIEW OF GALLERY—THE EAST ROOM.

95. Fruit and Flowers, 25 x 30. *Roberts.*
A dish of peaches, surrounded by grapes, berries, currants, musk and water melons, apples, &c., flanked with a claret punch, birds, &c.
96. Hunting the Deer, 25 x 30. *Lotichius.*
A deer, standing on the rocks in the foreground, is startled with the sound of the hunters' approach, and is preparing for a start.
97. A Peep at the Hudson, 35 x 50. *Wilson.*
View taken near West Point.
98. Natural Chivalry, 30 x 41. *Lotichius.*
A moonlight forest scene. In the foreground are two bucks in deadly combat, surrounded by young deer. On the right are tall pine-trees, in the middle distance is a pretty lake, and beyond are tall cliffs and mountains, which have a fine effect by moonlight.
99. Fisherman of Judea. *Myroy.*
A bronze statuette.
100. The Oetzthal (Tyrol), 29 x 36. *Sommers.*
A wild rocky scene, with deer in the foreground. The mountain-peaks are seen looming up above the mist, while a stream of water comes dashing over the rocks, forming a cascade.
- 101 to 124. Large bronze Medallions of Daniel Webster. . . . *Muller.*
Bas-relief.
125. The Fruit-gatherer, 6 x 10, oval.
Composition ivory.
126. The Forest-nymph, statuette in bronze. *Myroy.*
A partially nude figure seated on the stump of a tree, holding a nest of young birds in her hand.
127. The Hudson River, 33 x 48. *Villers.*
From a view near Newburgh. The noble river fills up the body of the picture. At the left are boys seated on the banks; beyond which are cattle drinking, and fishermen drawing the seine.
128. The Mother's Pet, 6 x 10, oval.
Medallion in composition ivory.
129. Fruit Piece, 25 x 30. *Roberts.*
Representing a basket of peaches, grapes, and cherries, the whole surrounded with oranges, apples, plums, berries, and melons, flanked with a bottle of wine and glasses.
130. Falstaff and Anne Page, 25 x 30. *Koffman.*
131. Winter Scene, with Cattle, 18 x 24. *Lawrence.*
132. Cook's Pond, 12 x 18, cabinet.
A view in Essex county, N. Y. A pond of water, on which boys are fishing in a boat.
133. Deer-hunting—The Shot, 25 x 30. *Lotichius.*
The deer, hotly pursued by hounds, are leaping into a stream. A hunter, on the opposite bank, is making the fatal shot. In the middle distance are rapids, huge moss-covered rocks, and old pines; beyond are mountains covered with foliage.
134. Gathering Fruit, 6 x 10, oval.
Ivory composition.
135. Squam Lake, N. H., 18 x 24. *Boardman.*
A quiet sheet of water, on the banks of which are hunters, tall trees, &c. The sun is just rising above the distant mountains.
136. Meditation, 15 x 18. *Burch.*
A fancy sketch, in oil, of a young lady seated on a moss-covered bank, in deep meditation, and studying the language of flowers.
137. Hudson River Scenery, 12 x 18. *Sommers.*
A view near Peekskill. Cabinet size.
138. The Masquerade, 28 x 38. *Currie.*
A scene in Italy, representing a group of Italians, with musical instruments, who have removed their masks, and are seated in the shade of a beautiful grove. The harlequin on the right is love-making.
139. The Lovers, 6 x 10, oval.
A composition ivory medallion.
140. View at Clarkstown, 33 x 48. *Hartwick.*
A scene in Rockland county, N. Y. On the right are figures coming up a country road. Trees, water, and foliage, beyond. In the middle distance is a snug farm-house, with broad meadows.
141. Pocahontas, 29 x 36. *Coelar.*
Saving the life of Captain Smith, whom a council of Indians are about executing. Pocahontas is bending over his prostrate form, and begging her father to spare him, &c.
142. Susquehanna River, 16 x 20. *Boardman.*
A view in Pennsylvania.
143. Deer-hunting, 25 x 30. *Lotichius.*
In the foreground is a noble stag at bay, with two hounds. Water, foliage, and mountains fill up the picture.
144. The Happy Mother, 6 x 10, oval.
Medallion in composition ivory.
145. A Winter in Holland, 26 x 32. *Martin.*
Snow-covered trees and huts, with skaters in the middle distance.

146. Fruit and Still Life, 25 x 30. *Roberts.*
A piece in which are represented pears, grapes, peaches, plums, apples, and cherries; flanked with a plate of muskmelon, and bottle of port, glasses, &c.
147. English Landscape, 17 x 21. *Harting.*
Composition, a pretty sunset scene. Figures, trees, and water in the foreground; on the right a snug little hamlet.
148. Gypsy's Prediction, 22 x 29. *Linell.*
An interior cottage scene. The young cottagers are showing their infant to the gipsy, who had years before predicted their marriage, and the birth of a son.
149. Moonlight View, 10 x 12. *Harting.*
The camp-fire of Marlon and his men. Cabinet size.
150. New Jersey Landscape, 36 x 29. *Sommers.*
A study of rocks, trees, and shrubs. In the foreground are wild-ducks sporting in the water; while a fox is seen prowling after them.
151. The Smugglers, 22 x 29. *West.*
A marine view at sunset, with a party of smugglers around their hut, while others are taking in water for their vessel in the distance.
152. The Hudson near Albany, 30 x 40. *Wilson.*
Still water and rocks in the foreground, with a cottage, green banks, and figures in the middle distance; beyond which is the river, on the banks of which are seen many pretty country-seats.
153. The Mother's Pet, 6 x 10, oval.
Medallion in composition ivory.
154. Fruit-piece, 25 x 30. *Roberts.*
A basket of peaches and grapes on the tablet, besides which are plums, apples, pears, cherries, and oranges, with birds.
155. The Deer-hunt, 25 x 30. *Lotichius.*
A party of hunters, with their dogs, are seated on a bank, resting from the chase. A dead buck lies at their feet. Tall trees beyond.
156. Marine View, 10 x 12. *Harting.*
An American fishing-smack coming in under reef.
157. The Shipwreck, 22 x 29. *Alcott.*
A terrible storm, with a ship being dashed to pieces against the rocks. A party has just been rescued from drowning.
158. Mount Orange Scenery, 12 x 18. *Sommers.*
A bit of water in the foreground, in which cows are cooling themselves, surrounded by foliage, rocks, &c.
159. The Happy Mother, 6 x 10, oval.
Medallion in composition ivory.
160. The Speedwell River, 12 x 18. *Sommers.*
A view in Morris county, N. J.
161. The Village Bride, 22 x 29. *Linell.*
The young man has come to claim his bride, and is receiving the marriage portion, and the blessing of the father.
162. View of Gibraltar, 22 x 26. *Menque.*
Oval landscape.
163. A Winter in Germany, 26 x 36. *Hart.*
Groups of figures, snow-covered huts, &c.
164. Faust and Margaret, 6 x 10, oval.
Composition Ivory medallion.
165. The Turn-out, 30 x 40. *Lotichius.*
An evening scene, representing several deer going to drink. Moss-covered rocks fill up the foreground; while in the middle distance are trees and high rocky cliffs; beyond which the sun is declining.
166. A Scene in Wales, 10 x 12. *Harting.*
Landscape. Cabinet size.
167. Fruit Composition, 18 x 24. *Roberts.*
Representing pears, apples, plums, grapes, berries, cherries, and melons.
168. A Winter in Holland, 10 x 12. *Harting.*
Cabinet size.
169. Columbus and his Son, 25 x 30. *Koffman.*
Historical composition.
170. Skowgan Creek, 22 x 30. *Eglan.*
A view in Ulster county, N. Y. The creek is winding in the distance through the meadows. Tall trees overhang its banks, near which are men and boys resting.
171. Landscape Composition, 11 x 15. *A. A.*
Cabinet size.
172. The Fishermen, 22 x 29. *West.*
A party of fishermen are about departing for their vessel. Others are seen in the distance.

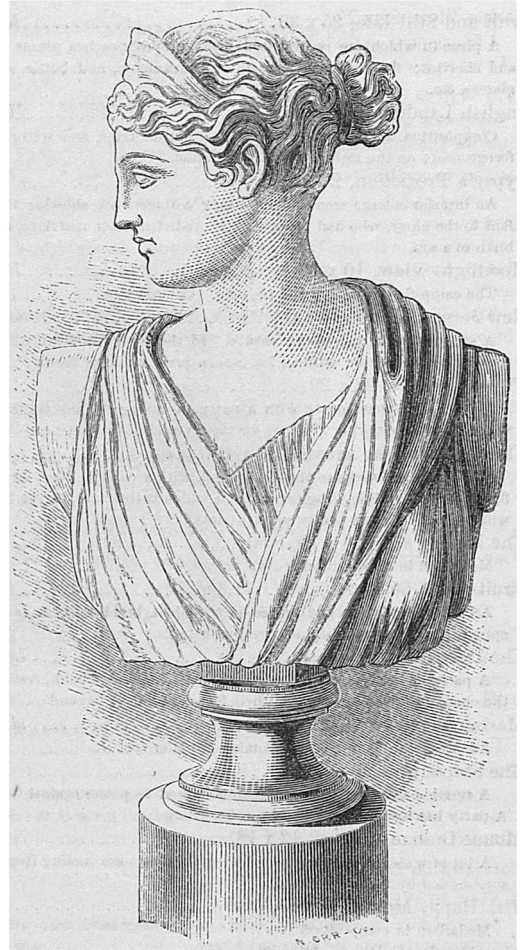


BUST OF APOLLO.

This noble work, the original of which is in the Vatican at Rome, was executed by the Italian artist, MARCI, from a single block of Carrara marble, and is somewhat larger than life size. It is designed for the distribution in January.

173. View in New Jersey, 12 x 18. *G. II.*
Sketch near Morristown.
174. Shipwreck on Cape Horn, 44 x 30. *Kromer.*
A fine marine view. Night scene.
175. The Lovers, 6 x 10, oval.
Composition ivory.
- 176 to 199. Large bronze Medallion of George Washington. . . . *Muller.*
200. The Hudson River, 25 x 30. *Sommers.*
From a view near Nyack. Greensward, foliage, and a country-house, are in the foreground; beyond is the river dotted with sails.
201. Drawing the Seine, 22 x 29. *West.*
A marine view, with several parties on the beach drawing the seine.
202. Fruit and Still Life, 18 x 24. *Roberts.*
A tablet, on which are represented a bottle of port, glasses, &c., with a profusion of fruit, pine-apples, grapes, pears, apples, &c.
203. Speedwell River, cabinet, 12 x 18. *G. II.*
A pretty stream of water, with banks covered with fullage. Two men are in a boat fishing; beyond are fields of grain and farm-houses.
204. The Pretty Hay-maker, 10 x 12. *Goodell.*
A young country girl, with a rake on her shoulder, and bundle of hay on her head, is returning from hay-making. A pet goat is beside her, and English farm-houses in the distance.
205. American Landscape, 10 x 12. *Harting.*
Cabinet size.
206. The Highland Hunters, 22 x 29. *Linell.*
A scene in Scotland. In the foreground is a group of peasants, who are celebrating the return of the father, son, and lover. In the distance are flocks of sheep with their shepherds.

207. View near Clarkstown, N. Y., 12 x 18. *A. S.*
A horseman in the foreground, with a farm-house in the valley below.
208. "Why don't he come?" 11 x 13. *Alcott.*
A Swiss peasant-girl watching for her lover's return. Cabinet size.
209. Olive Creek, 30 x 40. *Eglan.*
A view in Ulster county, N. Y. Rocks, trees, and still water in the foreground; beyond is the creek, with high hills in the distance.
210. New York Scenery, 25 x 30. *Sommers.*
View near Ticonderoga. A country road, with trees and shrubs, in the foreground; beyond is a beautiful sheet of water; while in the distance are hills and foliage.
211. The Rescue, 22 x 29. *Birch.*
A marine view, representing a terrific storm and shipwreck.
212. Passaic River, N. J., 12 x 18, cabinet.
Rocks, foliage, and figures, in the foreground; a farm-house in the middle distance; beyond is the river winding among the hills.
213. Returning from Market, 10 x 12. *Linell.*
An English scene, representing a pretty country lass seated on a stile, counting the proceeds of her trip to market.
214. Tyrolese Scenery, 25 x 30. *Sommer.*
Huge moss-covered rocks, over which water is pouring. Several deer in the middle ground, while beyond are great mountain-peaks.
215. The Orphan's Welcome, 22 x 29. *A. D.*
A group of cottagers giving welcome to the homeless.
216. The Old Ruins, 20 x 25. *Turner.*
A winter scene.
217. View in Connecticut, 12 x 18. *Wilson.*
Landscape. Cabinet size.
218. The Wrecker's Prize, 10 x 12. *Harting.*
Marine view after a storm.
219. English Landscape, 16 x 21. *Alcott.*
Composition.
220. Saratoga Scenery, 18 x 24. *Sommers.*
A view near Galaway. An artist is seated on a bank sketching. Still water and foliage form the foreground; beyond are children catching a horse; in the valley below is a farm-house and wooded fields.
221. A Marine View, 22 x 29. *A. B.*
A scene on the coast of France.
222. The Wissahicon Valley, Pa., 12 x 18. *Sommers.*
Huge rocks and foliage. A fox is seen prowling for game.
223. Fruit-piece Composition, 18 x 24. *Roberts.*
A fruit-vase containing peaches and grapes, with pine-apples, plums, pears, cherries, oranges, and apples, surrounding.
224. View in Rockland county, N. Y., 12 x 18. *Wilson.*
Landscape. Cabinet size.
225. The Toilet, 15 x 18, oval, panel. *Goodel.*
Fancy sketch. A beautiful young lady at her morning toilet.
226. Scene on the Delaware, Pa., 12 x 18. *Boardman.*
Landscape. Cabinet size.
227. View in the Holy Land, 10 x 12. *Harting.*
228. Mount Orange Scenery, 18 x 24. *Sommers.*
A view in Essex county, N. J. Foliage and green lawns; beyond is a rural cottage; wooded hills and valley extend in the distance.
229. Scene on the Hudson, 25 x 30. *A. S.*
Trees and shrubbery in the foreground; in the middle distance are cattle grazing on the meadows. A farm-house, with river, on the right.
230. Fishing by Moonlight, 10 x 12, cabinet.
231. View on the Speedwell, 25 x 30. *Villers.*
A rocky bank, with trees and figures; beyond is the river, with its banks lined with foliage.
232. Battle of the Alma, 26 x 32, oval.
A scene in the Russian war.
233. A Fog on the Rhine, 16 x 21, panel.
The water extends in the foreground. Boats and vessels are seen through the morning fog. An old castle on the left.
234. Pennsylvania Scenery, 18 x 24. *Sommers.*
A view on the Delaware River.
235. View on the Hudson, 12 x 18, cabinet.
From above Nyack.
236. Giving Alms, 22 x 29. *Turner.*
Two young country lasses, coming from church, are giving alms to the poor children of the parish.

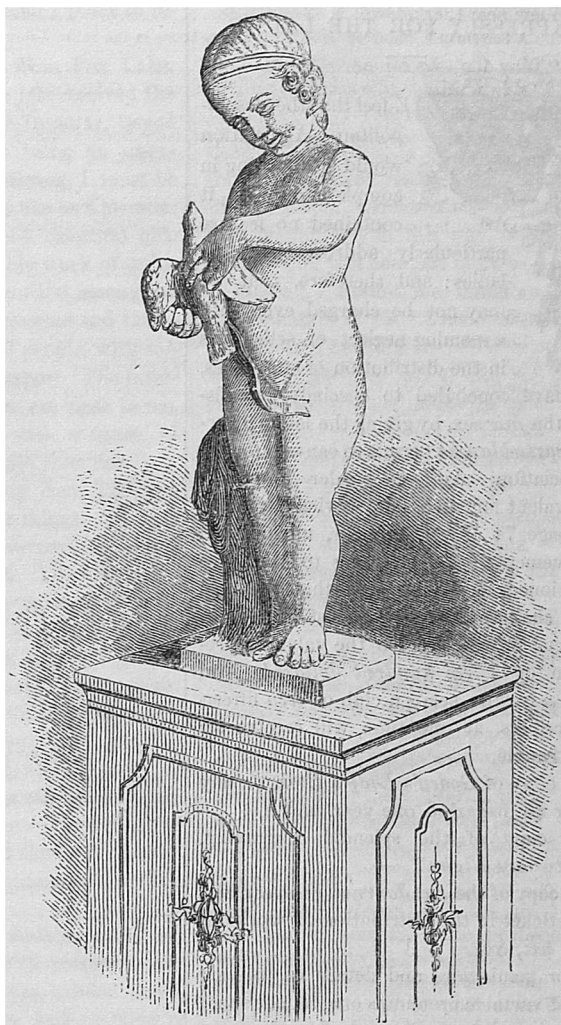


BUST OF DIANA.

A fine statuary, life-size bust of Diana, the "Goddess of the Chase," executed by an Italian artist in Carrara, Italy, from a single block of Carrara marble, and designed for the distribution in January next.

237. Landscape Composition, 20 x 25. *A. D.*
238. Marine View, 10 x 12. *Harting.*
The Roadstead.
239. Winter Scene, 22 x 26, oval.
An ice-bound stream, with skaters. Snow-covered trees and cottages on the right.
240. Landscape in Germany, 10 x 12. *Harting.*
Cabinet size.
241. View near Ticonderoga, N. Y., No. 2, 25 x 30. *Gilbert.*
A country road, with horsemen. A sheet of water and island in the middle distance; while beyond are high hills and foliage.
242. American Landscape, 18 x 24. *Sommers.*
Composition.
243. Composition Fruit-piece, 18 x 24. *Roberts.*
A basket of grapes, peaches, and cherries, surrounded with melons, pears, apples, plums, &c.
244. The Delaware River, 10 x 12, cabinet.
Sunset scene, with sail and row boats in the foreground.
245. Winter Landscape, 10 x 12. *Harting.*
246. View in Ulster County, N. Y., 20 x 24. *Eglan.*
A small stream running over a rocky bed; beyond which are figures and dense woods.
247. View in Rockland County, N. Y., 18 x 24. *Sommers.*
248. Composition Landscape, 16 x 21. *S. B. O.*

249. Marine View, 22 x 29 *Allcot.*
A fishing-party on the left, with boat on the beach.
250. A View in Switzerland, 20 x 25 *A. B.*
- 251 to 274. Large bronze Medallions *Muller.*
Bas-reliefs of *Cley* and *Calhoun.*
275. View on the Mohawk River, 12 x 18 *A. S.*
276. Coming from the Bath, 15 x 18 *Goodel.*
A fancy sketch of a flaxen-haired miss, who has been bathing.
277. Scenery near Peekskill, 25 x 30 *Wilson.*
A view of the Hudson River, dotted with sails. On the right, a wooded bank. A country road, with horseman and dog coming up.
278. The Paralytic, 22 x 29 *Linnel.*
The father, who has been visited by a stroke of palsy, is surrounded by his anxious family, who are seeking to alleviate his sufferings.
279. A Swiss Cottage, 20 x 25 *West.*
Composition.
280. Landscape Composition, 20 x 25 *A. B.*
281. The Gleaner, 18 x 21 *Wilson.*
An English peasant-girl, seated by the road-side, with gleanings in her lap.
282. Wild Western Scenery, 12 x 18 *A. S.*
Landscape. Cabinet size.
283. A Scene in France, 10 x 12 *Harting.*
284. View near Morristown, N. J. *Sommers.*
285. Landscape Composition, 12 x 18, cabinet
Trees and dense foliage in the foreground; beyond are cattle.
286. Fruit Piece, 18 x 24 *Roberts.*
A basket containing peaches, cherries, and grapes; besides which are melons, pears, apples, plums, and berries.
287. View near Newburgh, 25 x 30 *Villers.*
On the left is a wagon-road, with a person seated on rocks. Beyond is the beautiful Hudson, and high hills, with foliage in the distance.
288. A Scene in New Jersey, 12 x 18 *C. H.*
A stream of water on the left, spanned by a bridge, over which a farmer, with his market-wagon, is passing. The Speedwell River in the distance.
289. The Jolly Wreckers, 10 x 13, cabinet
Composition Landscape, 10 x 12 *Harting.*
291. A View in Wisconsin, 12 x 18 *West.*
Cabinet size. A quiet bit of water in the foreground, with wild-ducks sporting, surrounded by rocks and foliage.
292. The Gamblers, 11 x 14, panel
An old Italian scene.
293. A Winter in Holland, 22 x 26 *Linnel.*
A group of peasants, who have been gathering fagots, are talking with a hunter at the road-side. On the left are scraggy oaks, covered with snow.
294. Landscape Composition, 20 x 25 *A. D.*
295. Sunset, 10 x 12 *H. A. P.*
Hunters resting. A composition.
296. Scene near Fort Hall, Oregon, 50 x 40 *Lotichus.*
A romantic scene in the mountainous region of Oregon, a beautiful cascade dashing over the rocks, forming a placid stream in the foreground. The rocky peaks in the distance, tipped with the rays of the sun, give an effect unsurpassed.
297. The Battle of Inkerman, 26 x 32
Scene in the Russian war.
298. Winter Landscape, 16 x 21 *West.*
299. View in Switzerland, 20 x 25 *A. D.*
300. The Last Supper, 14 x 20, cabinet
Composition.
301. Hunting Scene, 18 x 24 *Linnel.*
A view near Mount Orange. Trees, rocks, and water make up the foreground. A hunter is shooting a hare, and dog in pursuit.
302. Christmas Morning, 22 x 29 *Watson.*
A happy family group. The father is opening a Christmas bag of gifts for the children.
303. A Winter Sketch, 16 x 21 *D. B.*
Composition.
304. Landscape, 16 x 21 *Morand.*
305. Scene in Germany, 16 x 21 *D. B.*
306. View near Morristown, 18 x 24 *A. A.*
Figure beneath a large tree, with meadows extending in the valley below.



THE CAPTIVE BIRD.

A statue, life-size, executed in statuary marble, after the original by Crantre—represents a child with a bird, which he has captured, and is binding its feet. This is also designed for the distribution in January.

307. Composition, 11 x 14
On panel. Cabinet size.
308. View in Scotland, 16 x 21 *D. B.*
309. Landscape Composition, 16 x 21 *D. B.*
310. Putnam County Scenery, 18 x 24 *Sommers.*
A cow is drinking at the brook on the left. A snug farm-house, with fields of grain, figures, &c., fill up the middle distance.
311. Source of the Missouri, 50 x 40 *Lotichus.*
A scene in the Oregon mountains, presenting bold, rocky peaks, interspersed with trees and shrubbery. Herdsmen are driving their cattle. The setting sun gives a most beautiful effect among the mountains.
312. Skating Scene—Winter, 12 x 18, with glass
Composition, 16 x 21 *G. S.*
A view in the north of Germany.
314. Fishing—Landscape, 16 x 21 *D. B.*
315. View on the Mohawk, 18 x 24 *Swift.*
Rocks, with foliage, and a fox is seen in the background. A farm-house, with cattle grazing, in the middle distance; beyond is the river.
316. Cattle Piece, 19 x 25 *After Potter.*
Several cattle are cooling themselves in a stream.